

**CURVE DATA**

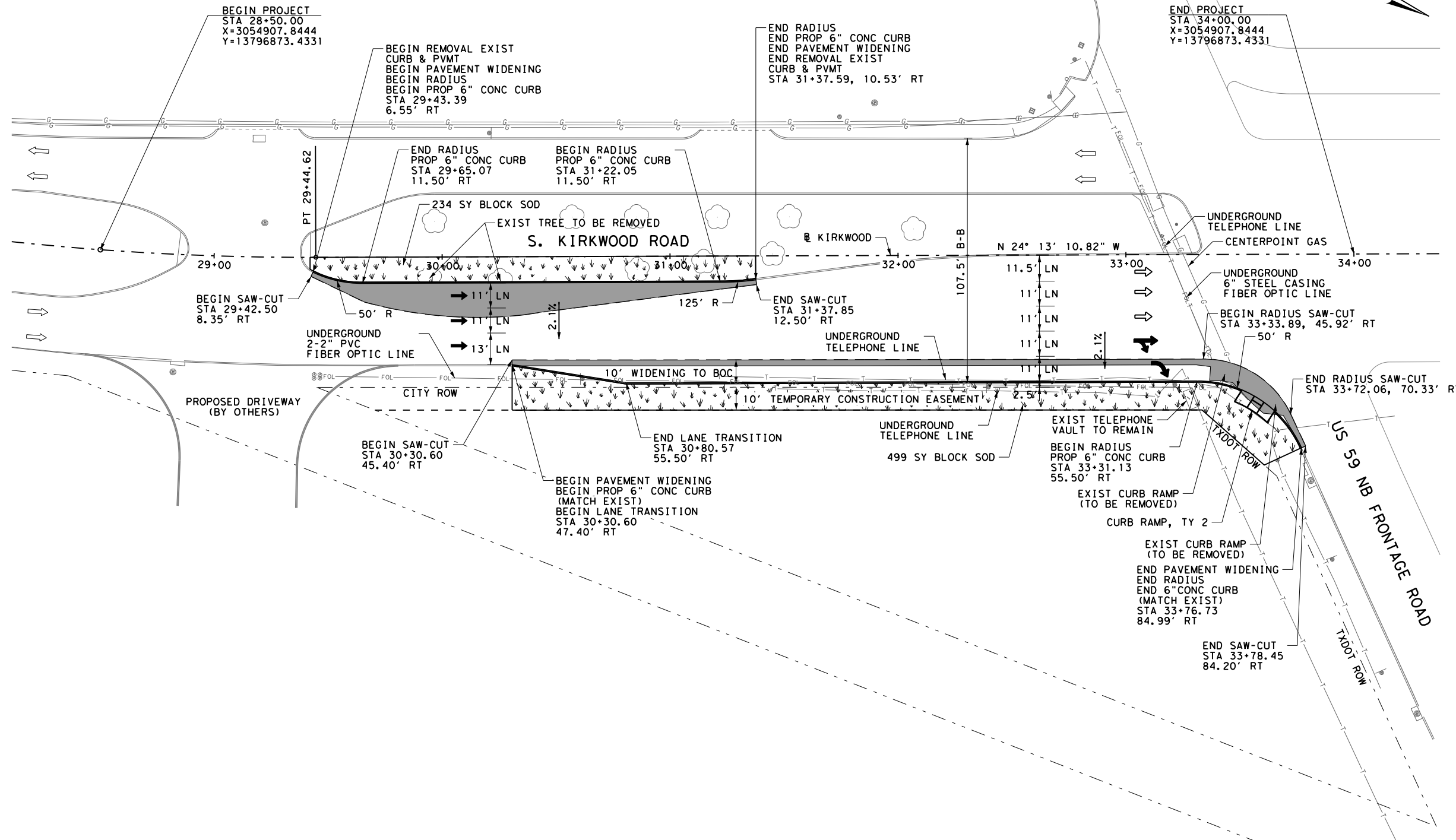
PI STATION = 24+12.17  
 DELTA = 54° 32' 25.78" (LT)  
 DEGREE OF CURVE = 4° 41' 46.95"  
 TANGENT = 628.89  
 LENGTH = 1,161.33  
 RADIUS = 1,220.00  
 PC STATION = 17+83.29  
 PT STATION = 29+44.62  
 BACK = N 30° 19' 14.96" E  
 AHEAD = N 24° 13' 10.82" W

**LEGEND**

- ← PROPOSED TRAFFIC DIRECTION ARROW
- ⇐ EXISTING TRAFFIC DIRECTION ARROW
- █ EXIST PAVEMENT REMOVAL
- ▨ BLOCK SOD

**NOTES:**

1. DESIGN SPEED = 40 MPH
2. ALL DIMENSIONS ARE TO FACE OF CURB UNLESS OTHERWISE NOTED.
3. SAW-CUT TO BE INCIDENTAL TO REMOVAL.
4. UTILITY LOCATIONS ARE APPROXIMATE. CONTRACTOR SHALL FIELD VERIFY PRIOR TO CONSTRUCTION OPERATIONS.



*Chris S. Mundie*  
 Jun. 24, 2016



REV. NO.	DATE	DESCRIPTION	BY

**LJA Engineering, Inc.**   
 FRN - F-1386



**S. KIRKWOOD ROAD  
 AT US 59 NB FRONTAGE ROAD  
 PAVEMENT WIDENING LAYOUT**

FED. RD. DIV. NO.	STATE	PROJECT NO.		HIGHWAY NO.
6	TEXAS			
STATE DISTRICT	COUNTY	CONTROL NO.	SECTION NO.	JOB NO. SHEET NO.
	FORT BEND			14

6/11/13 AM Jun. 24, 2016 J:\1216\1406B\CADD\ROADWAY\1216-1406B-PV101.dgn