

LEGEND

- SIGNAL POLE
- MAST ARM
- SIGNAL CONTROLLER
- ⬅ HORIZONTAL SIGNAL HEAD
- ⌚ SIGN ON MAST ARM
- GROUND BOX TY D W/APRON
- ⚡ SERVICE & METER DISCONNECT
- Ⓜ CONDUIT (TRENCH)
- Ⓜ CONDUIT (BORE)
- ▭ VIVDS DETECTION ZONE
- ⌚ PEDESTRIAN SIGNAL
- ⌚ PEDESTRIAN PUSHBUTTON
- ⌚ EMERGENCY PREEMPTION DETECTOR
- 📷 VIVDS CAMERA
- ⌚ LUMINAIRE WITH ARM
- ➡ TRAFFIC DIRECTION

NOTE:
1. REFER TO SIGNAL DETAILS PLAN SHEET FOR CONDUIT RUN ELECTRICAL SCHEDULE.



1/24/2017
0' 10' 20' 40'
SCALE: 1"=40'

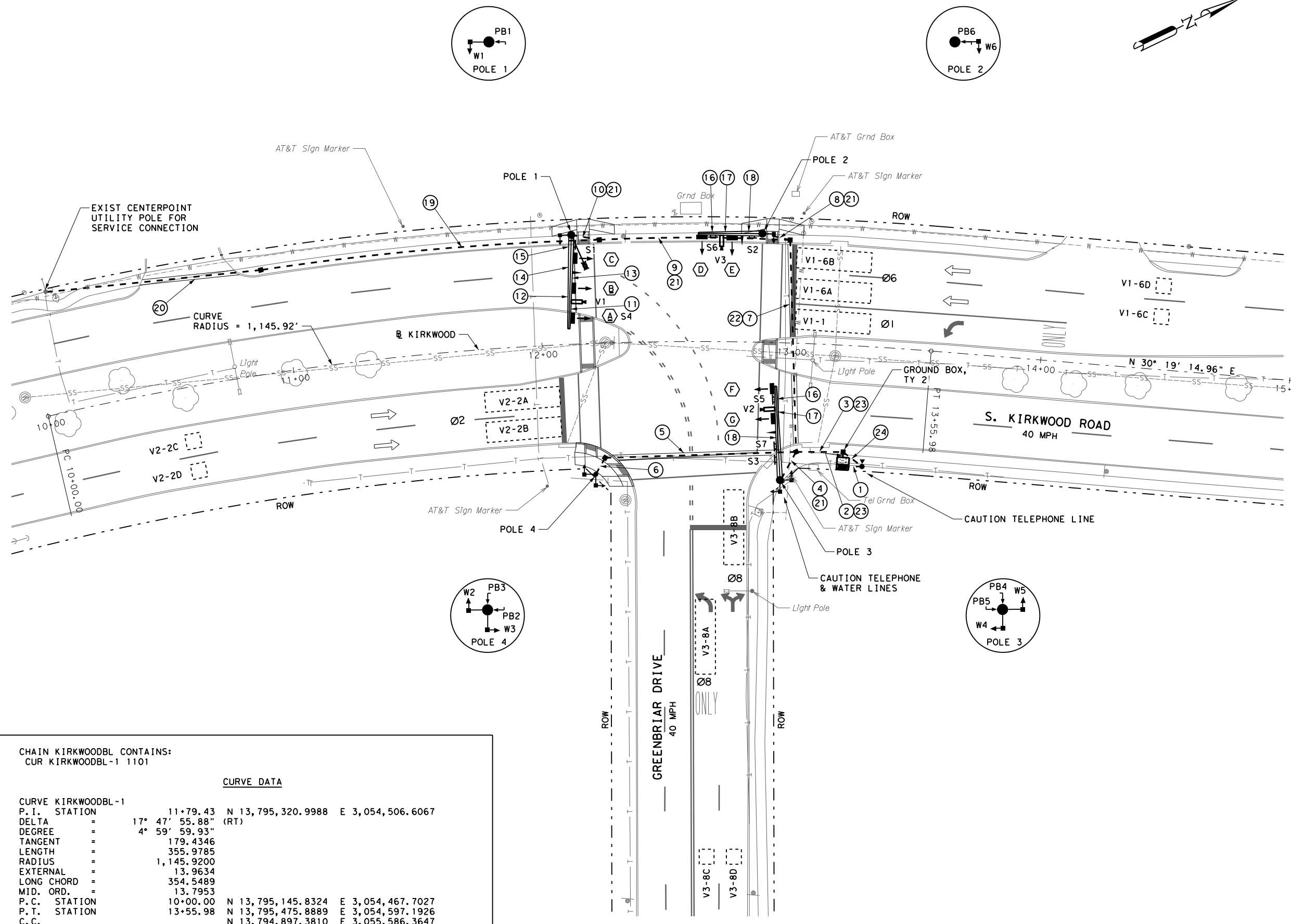
REV. NO.	DATE	DESCRIPTION	BY

LJA Engineering, Inc.
FRN - F-1386



S. KIRKWOOD ROAD
AT GREENBRIAR DRIVE
TRAFFIC SIGNAL LAYOUT

FED. RD. DIV. NO.	STATE	PROJECT NO.	HIGHWAY NO.
6	TEXAS		
STATE DISTRICT	COUNTY	CONTROL NO.	SECTION NO.
	FORT BEND		
		JOB NO.	SHEET NO.
			10



CHAIN KIRKWOODB1 CONTAINS:
CUR KIRKWOODB1-1 1101

CURVE DATA

CURVE KIRKWOODB1-1
 P. I. STATION = 11+79.43 N 13,795,320.9988 E 3,054,506.6067
 DELTA = 17° 47' 55.88" (RT)
 DEGREE = 4° 59' 59.93"
 TANGENT = 179.4346
 LENGTH = 355.9785
 RADIUS = 1,145.9200
 EXTERNAL = 13.9634
 LONG CHORD = 354.5489
 MID. ORD. = 13.7953
 P. C. STATION = 10+00.00 N 13,795,145.8324 E 3,054,467.7027
 P. T. STATION = 13+55.98 N 13,795,475.8889 E 3,054,597.1926
 C. C. = N 13,794,897.3810 E 3,055,586.3647
 BACK = N 12° 31' 19.08" E
 AHEAD = N 30° 19' 14.96" E
 CHORD BEAR = N 21° 25' 17.02" E

COURSE FROM PT KIRKWOODB1-1 TO 1101 N 30° 19' 14.96" E DIST 144.0215

POINT 1101 N 13,795,600.2100 E 3,054,669.9007 STA 15+00.00

9:45:59 AM 1/24/2017
 J:\1216\1406B\CADD\SL\CHAL\1216-1406B\S002.dgn